



BY NEVIN UÇAR  
"ÇELEBİ"  
BY



[www.newinkle.weebly.com](http://www.newinkle.weebly.com)



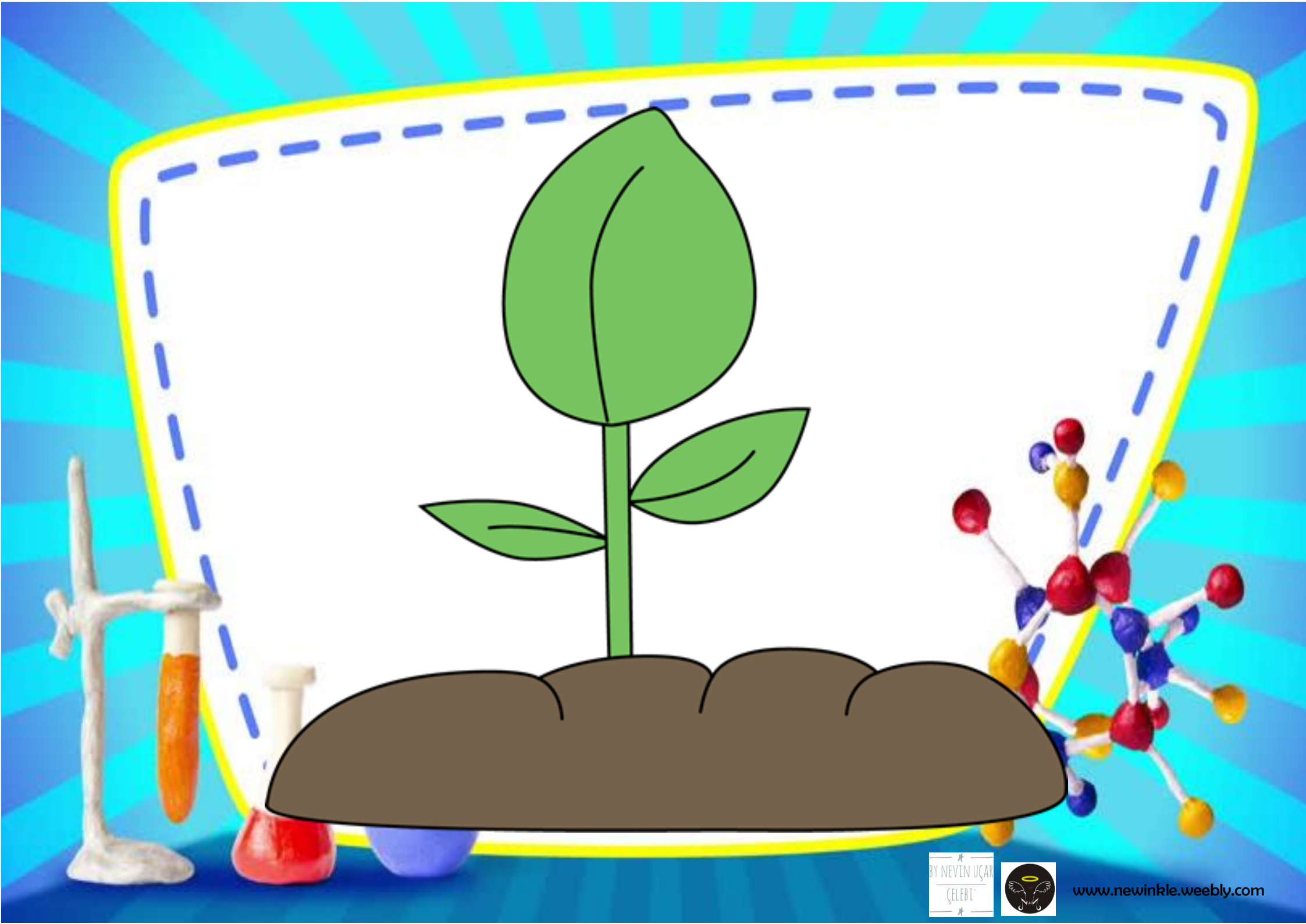
BY NEVIN UÇAR  
ÇELEBİ



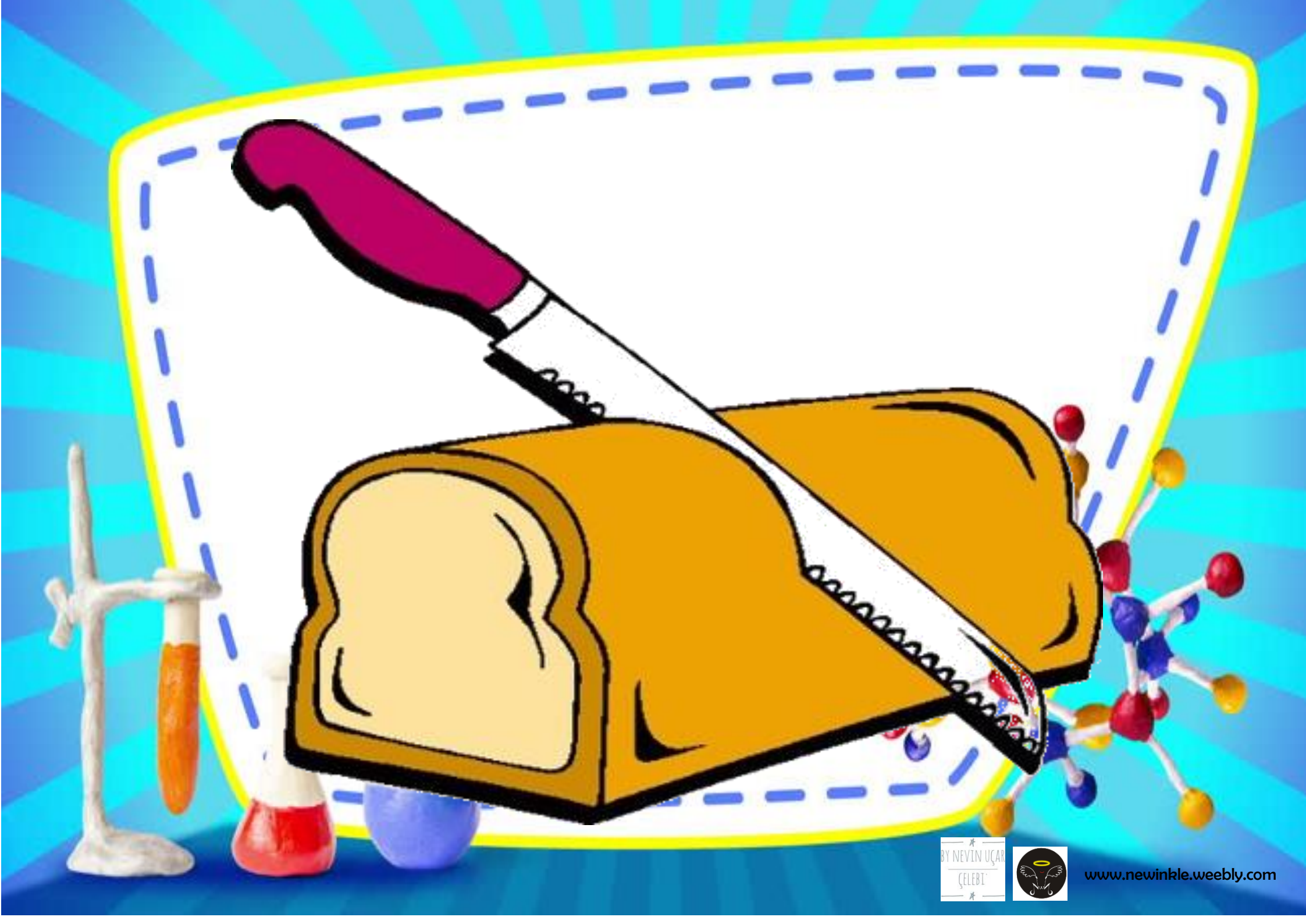
[www.newinkle.weebly.com](http://www.newinkle.weebly.com)

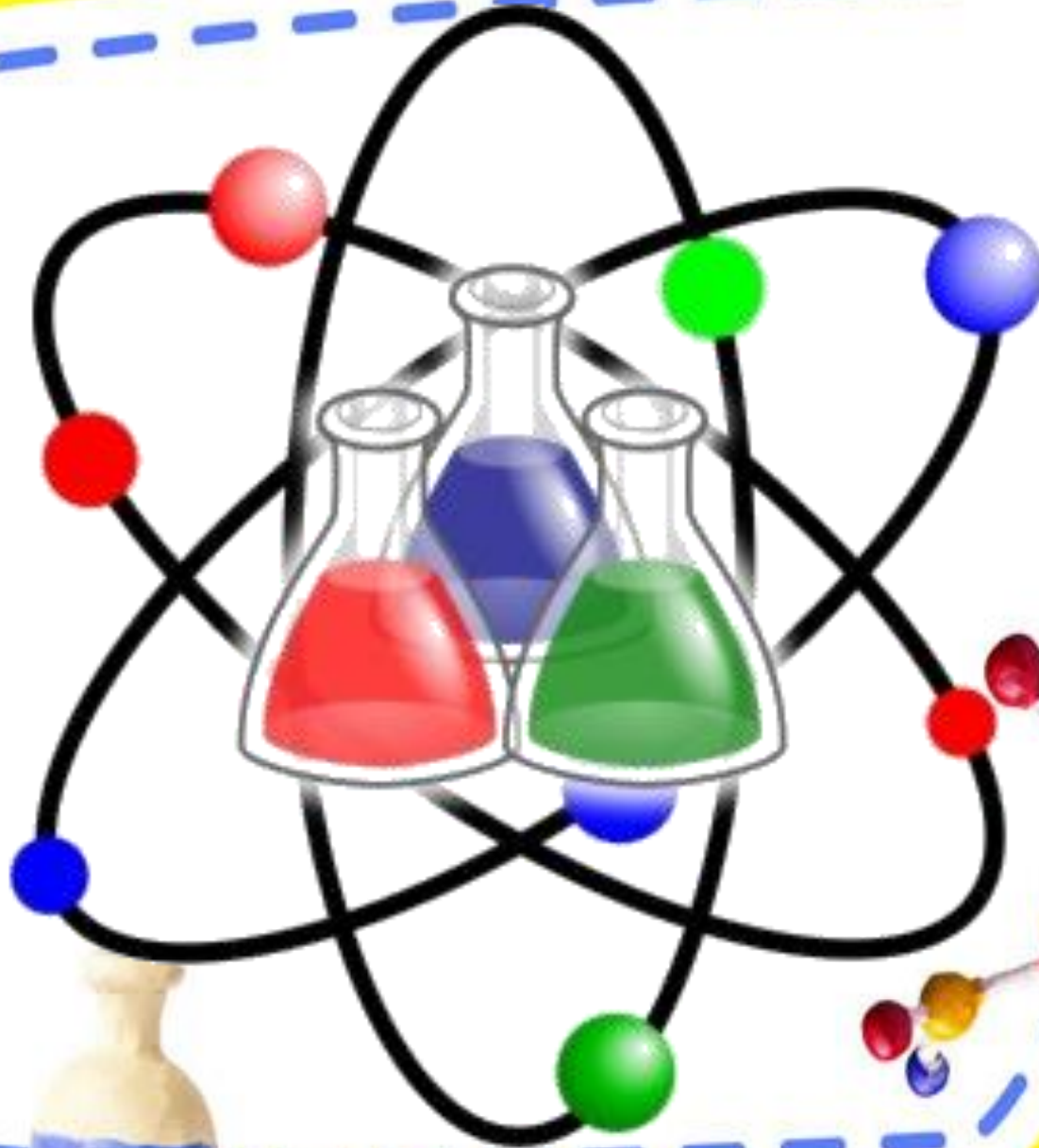




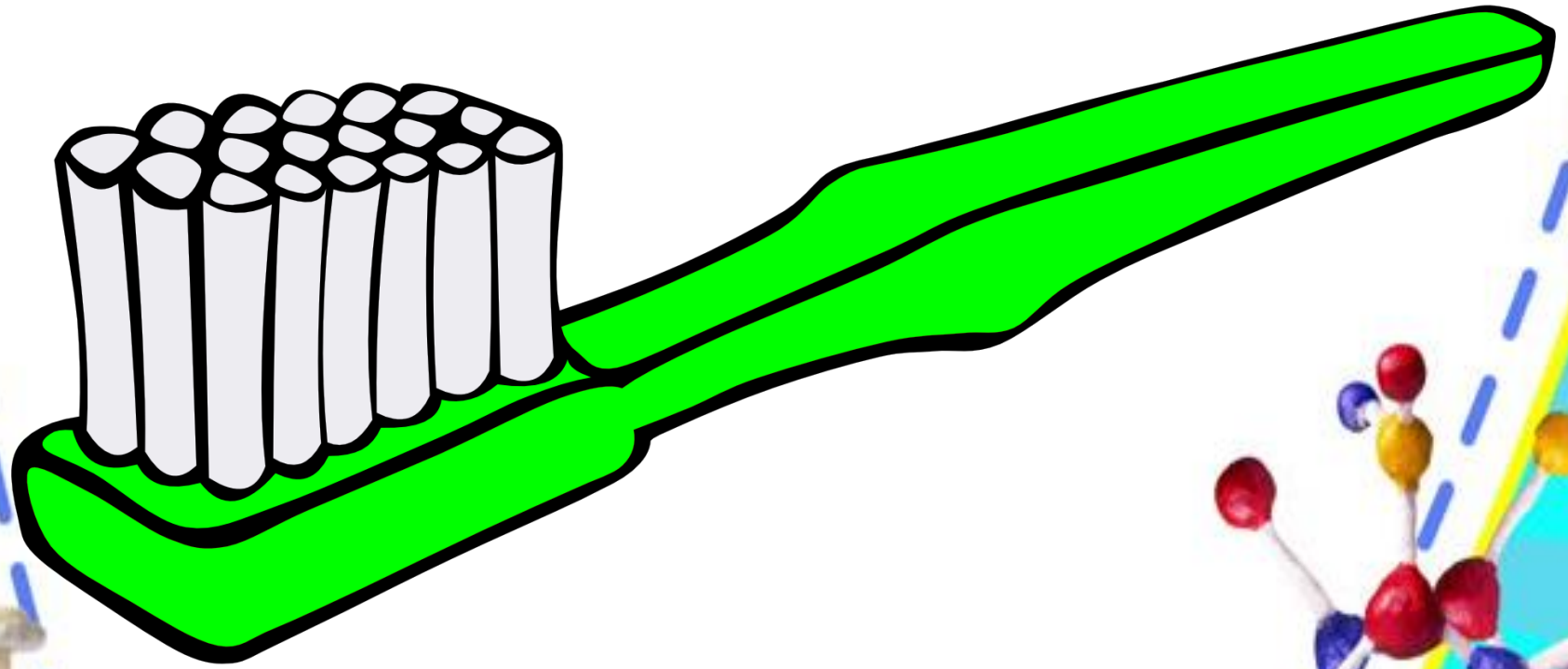




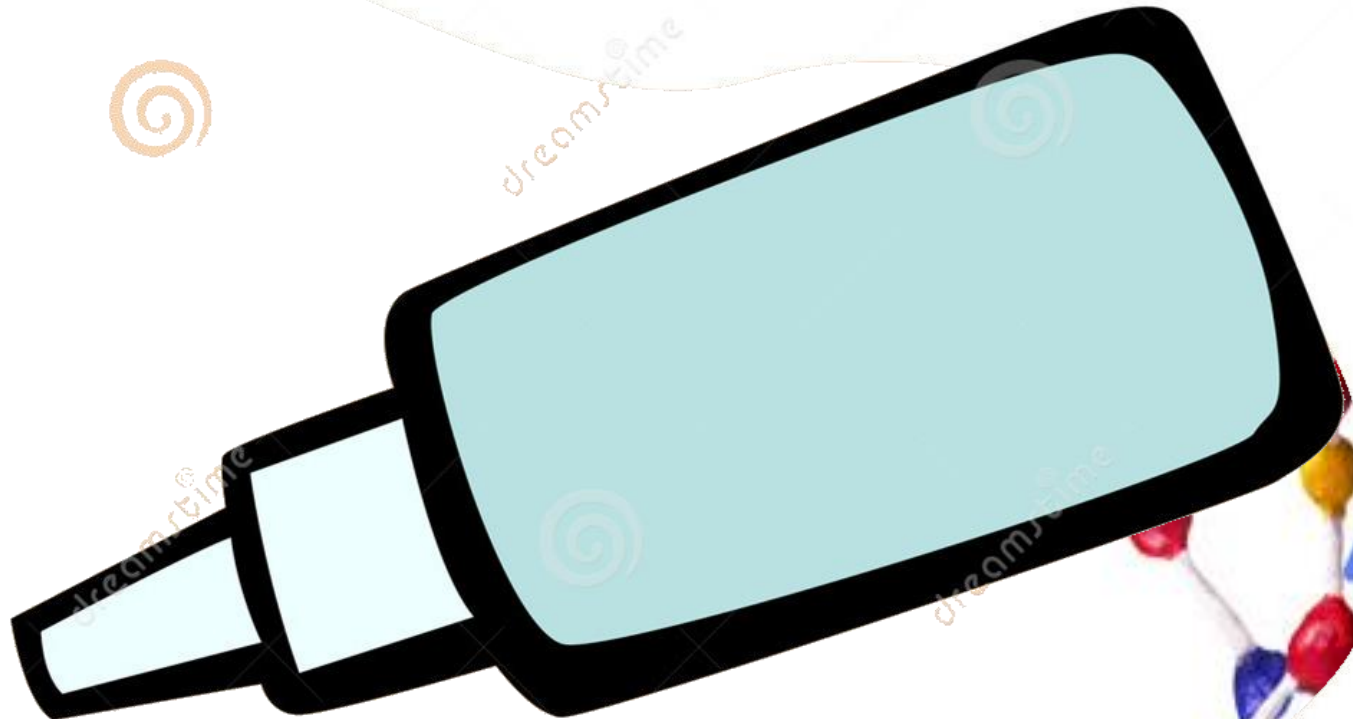
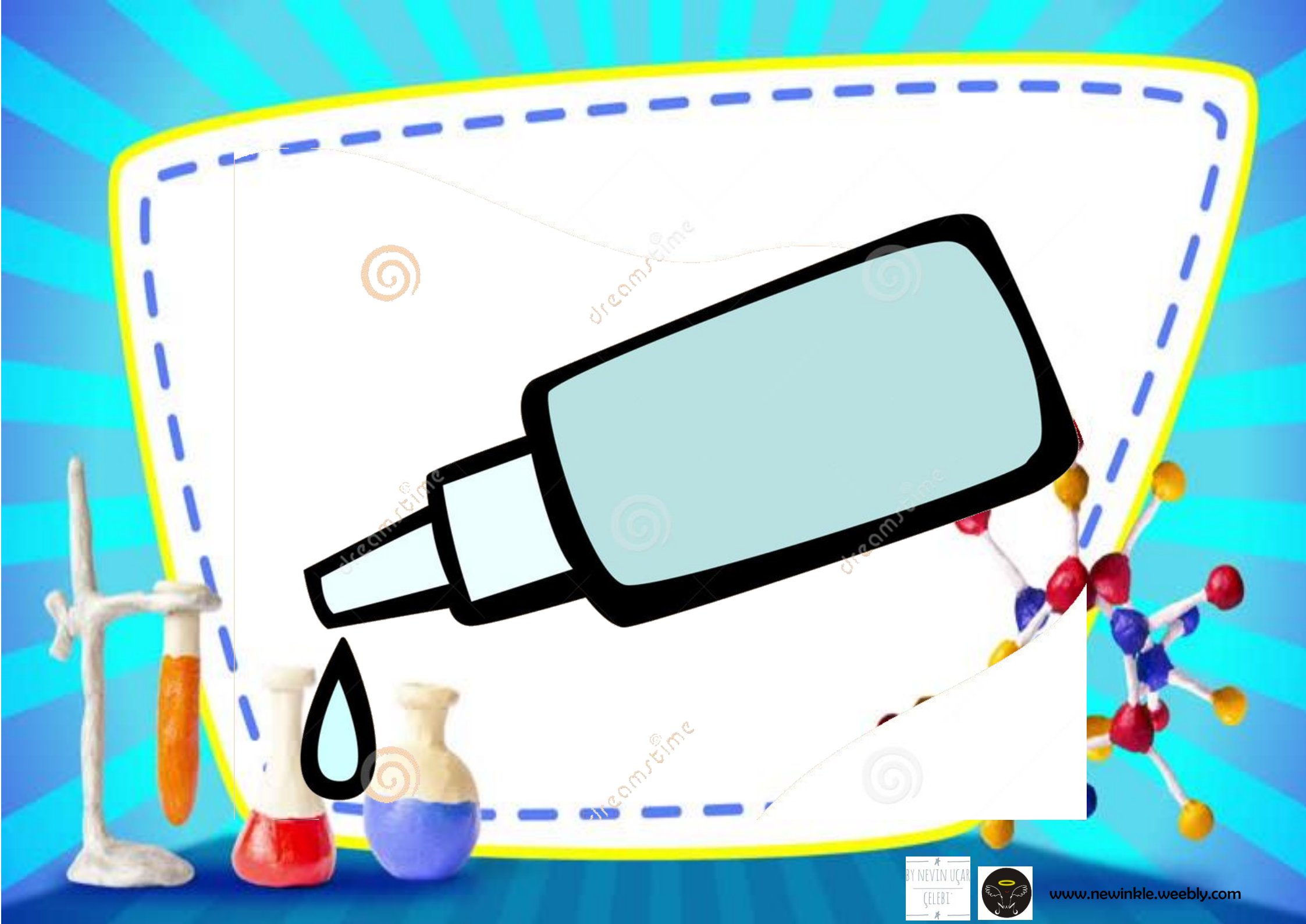










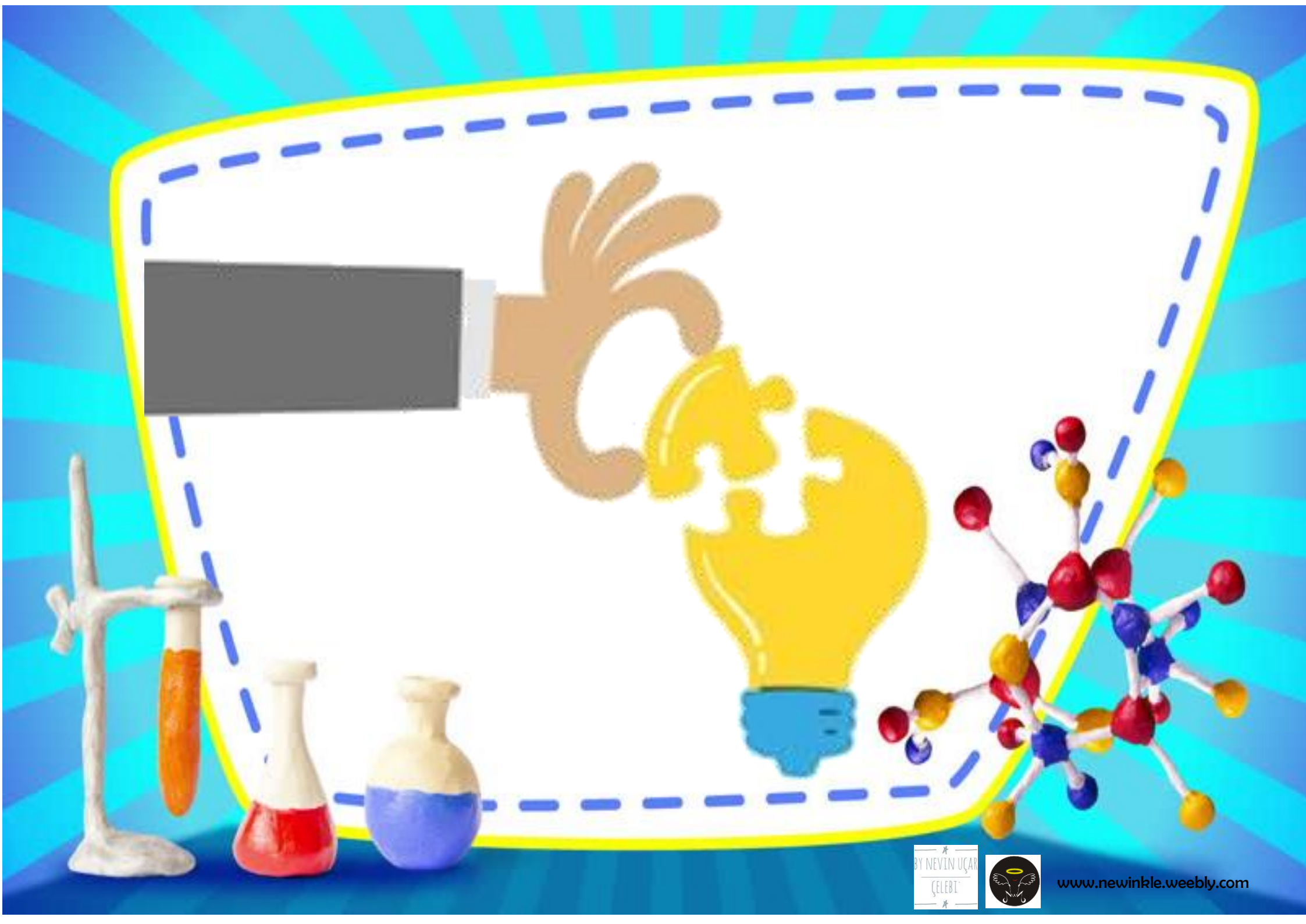




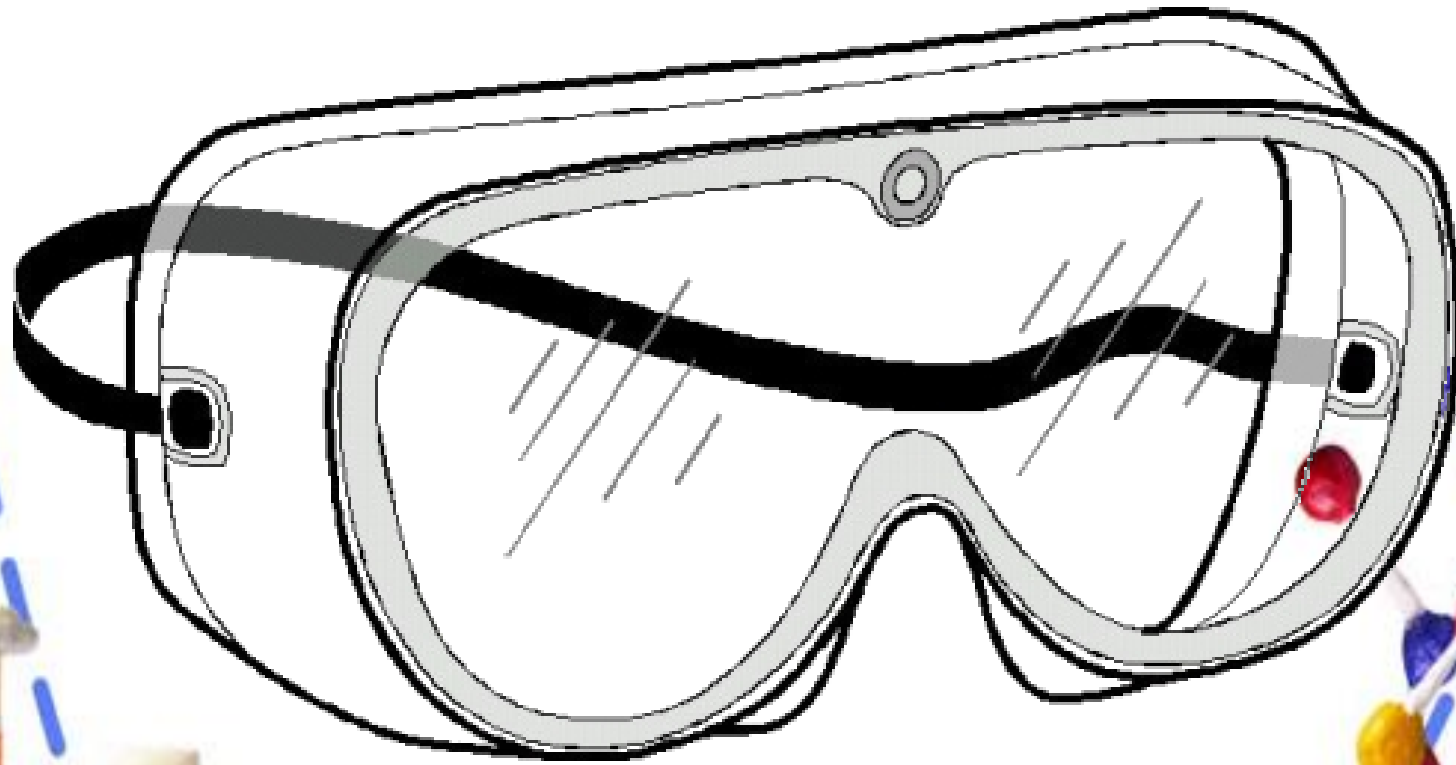


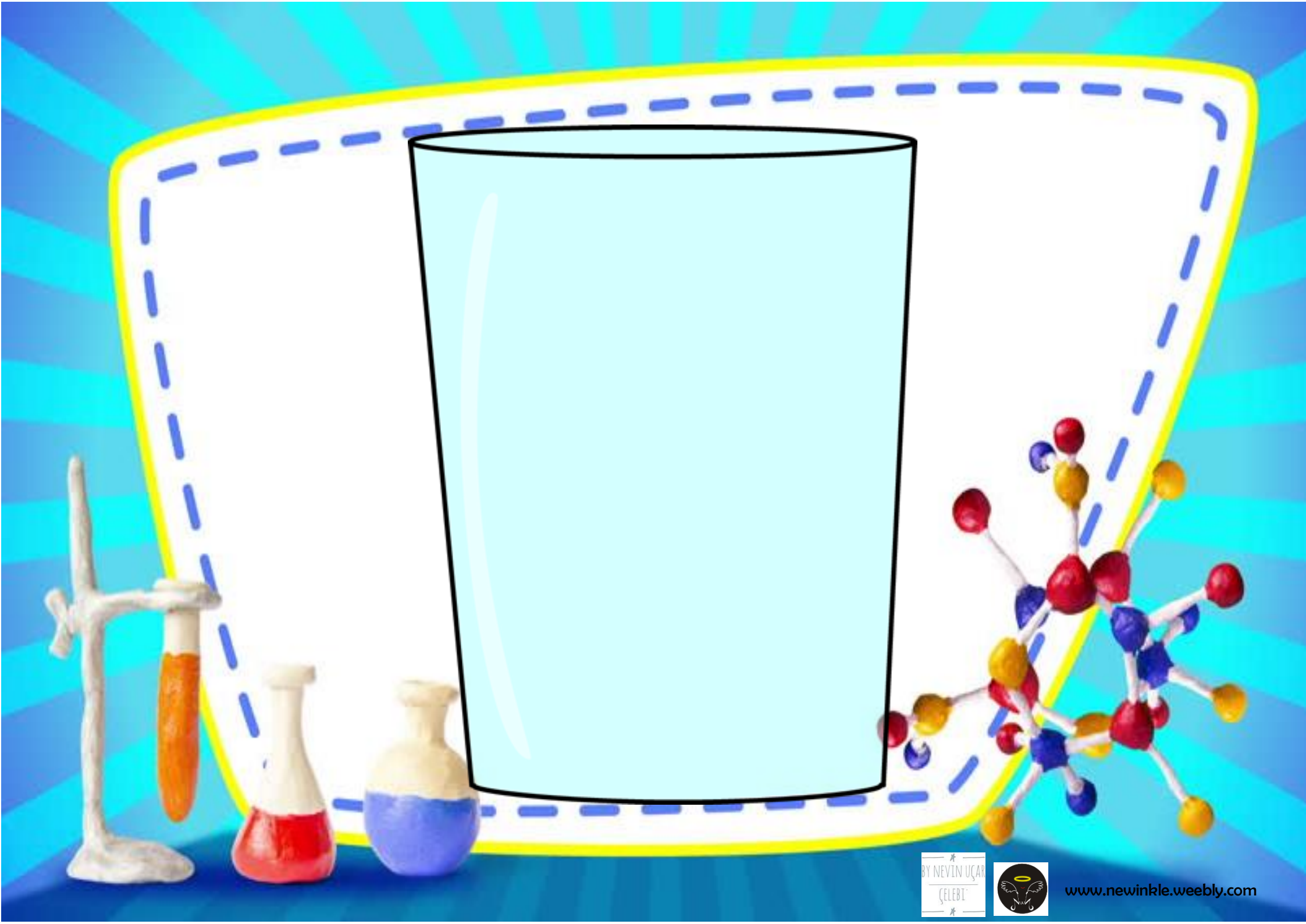


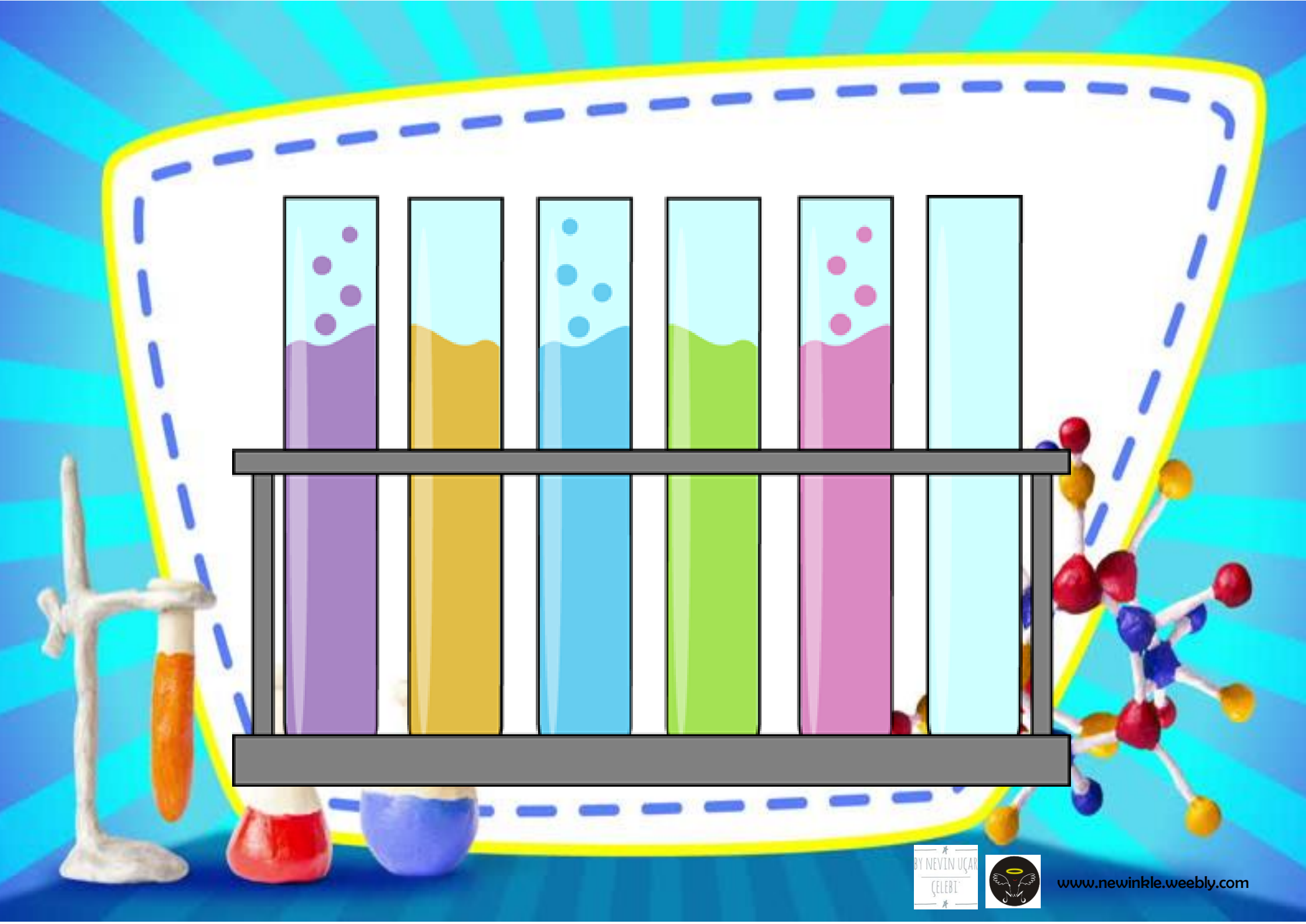
















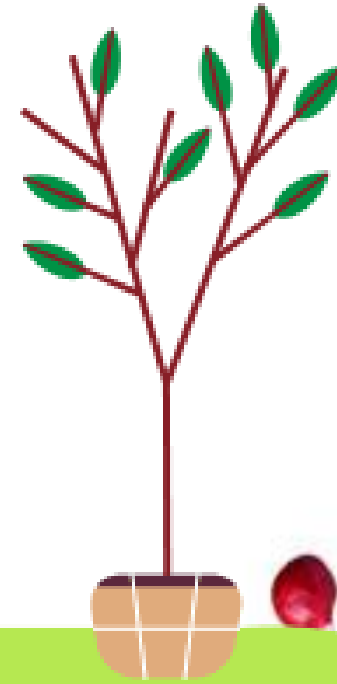
envato

envato

BY NEVIN UÇAR  
ÇELEBİ



[www.newinkle.weebly.com](http://www.newinkle.weebly.com)









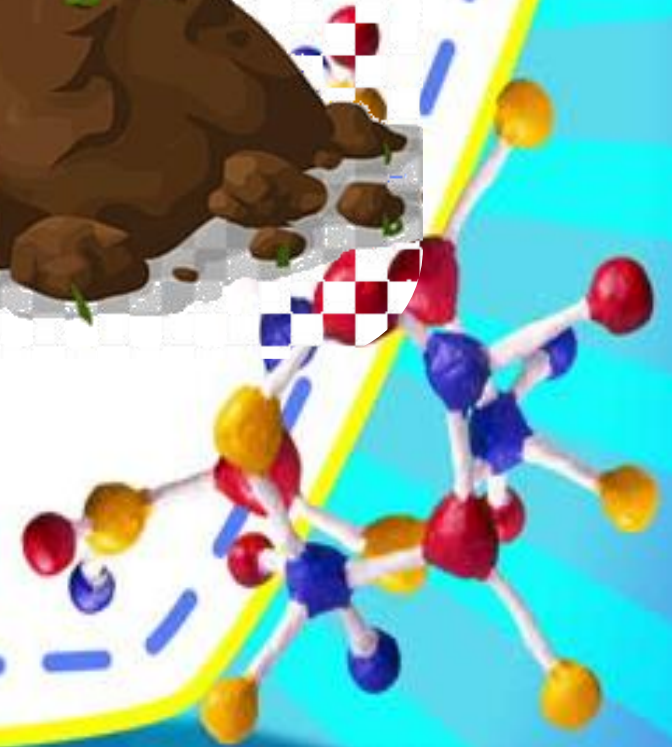


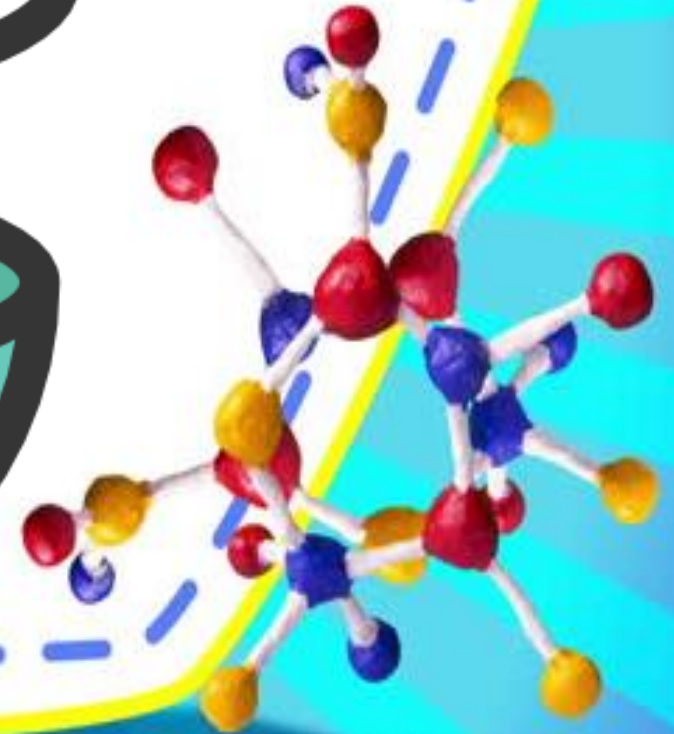


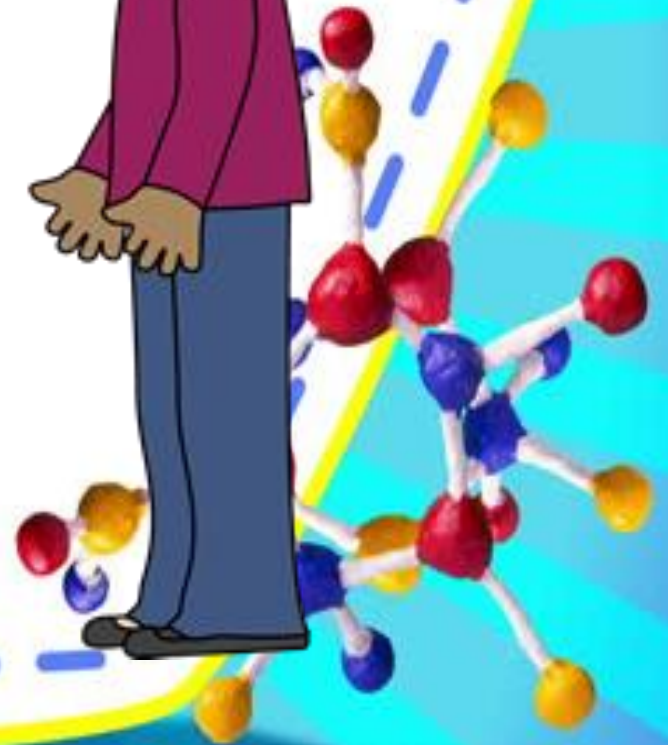
BY NEVIN UÇAR  
ÇELEBİ

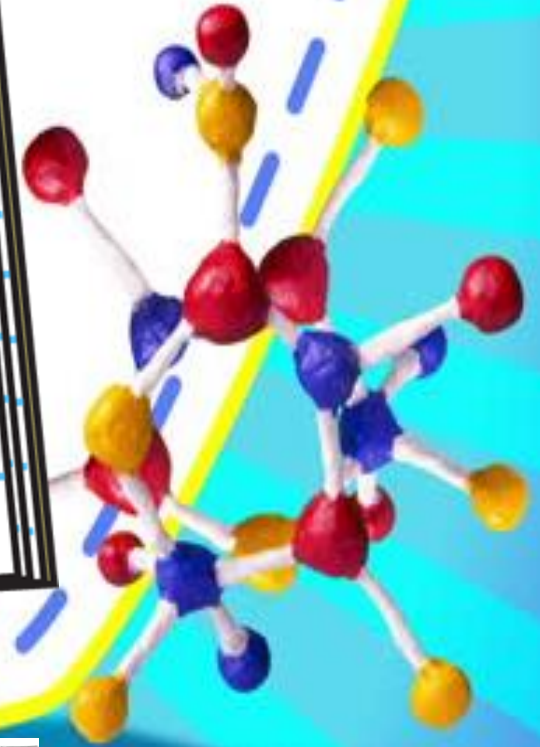


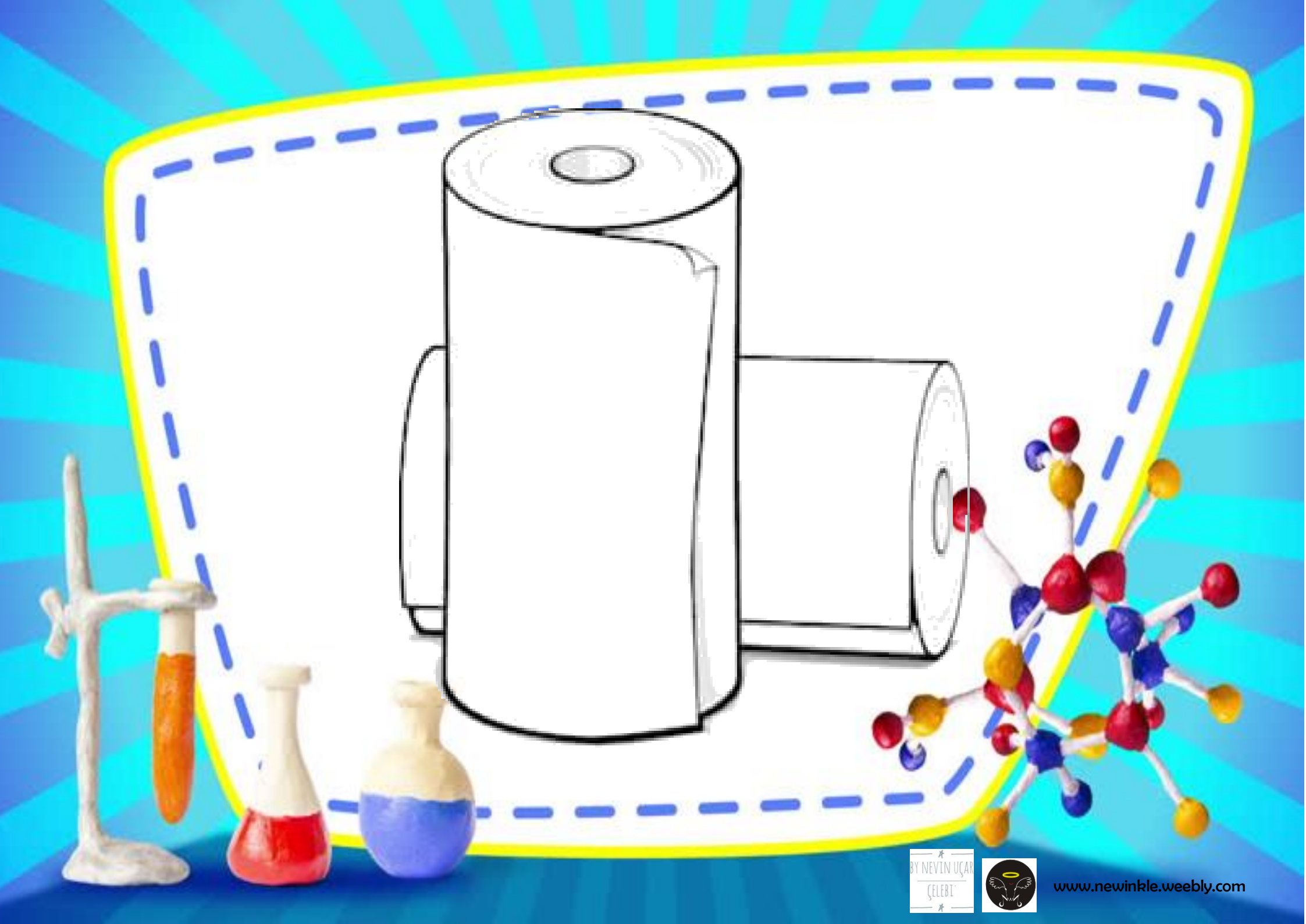
[www.newinkle.weebly.com](http://www.newinkle.weebly.com)











BY NEVIN UÇAR  
ÇELEBİ



[www.newinkle.weebly.com](http://www.newinkle.weebly.com)



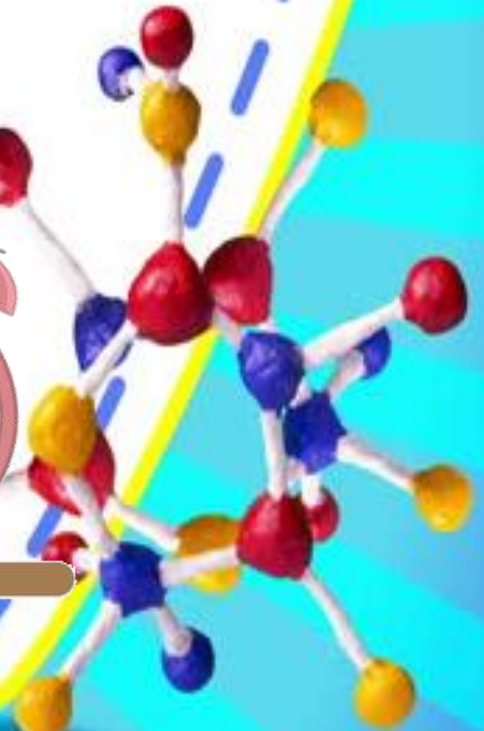








dreamstime

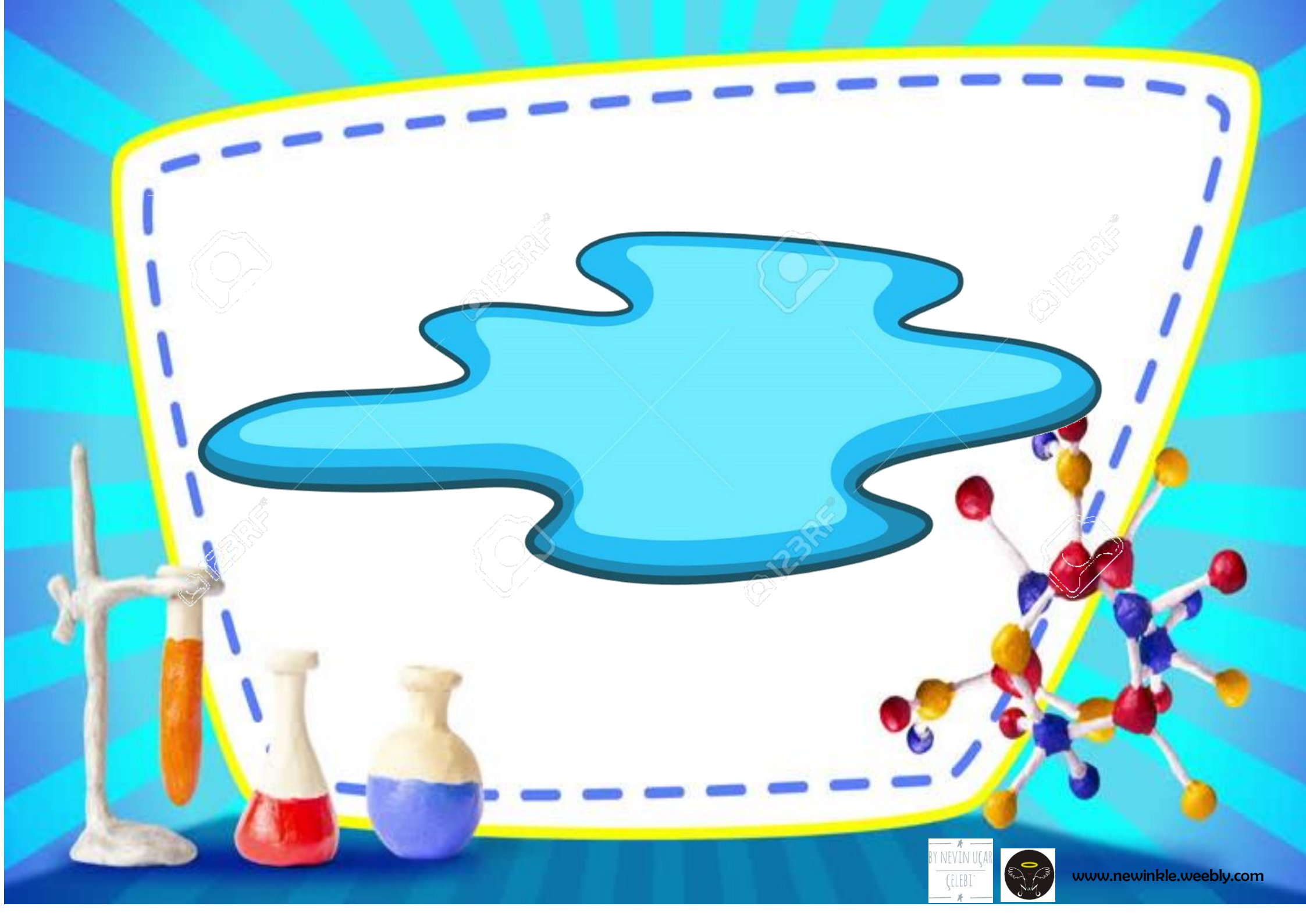


BY NEVIN UÇAR  
ÇELEBİ



[www.newinkle.weebly.com](http://www.newinkle.weebly.com)





BY NEVIN UÇAR  
ÇELEBİ



[www.newinkle.weebly.com](http://www.newinkle.weebly.com)

**SCIENTIST**

**SCIENCE**

**EXPERIMENT**

**ECOSYSTEM**

**CUP**



**SOIL**




**SCISSORS**



**GLASS**



The background of the entire image is a vibrant blue and cyan radial pattern. In the foreground, there are several science-related items: a white laboratory stand with a test tube containing orange liquid, a round-bottom flask with red liquid, and a beaker with blue liquid. To the right, there is a colorful ball-and-stick molecular model with red, blue, and yellow spheres. A white banner with a yellow border and a blue dashed line is positioned across the top, containing the word 'PEBBLES' in large, bold, black letters.

**PEBBLES**

The background of the entire image is a vibrant blue and cyan radial pattern. In the foreground, there are several science-related items: a white laboratory stand with a test tube containing orange liquid, a round-bottom flask with red liquid, and a beaker with blue liquid. To the right, there is a colorful ball-and-stick molecular model with red, blue, and yellow spheres. A white banner with a yellow border and a blue dashed line is positioned across the top, containing the word 'PEBBLES' in large, bold, black letters.

**FOOD COLORING**

The background of the entire image is a vibrant blue and cyan radial pattern. In the foreground, there are several science-related items: a white laboratory stand with a test tube containing orange liquid, a round-bottom flask with red liquid, and a beaker with blue liquid. To the right, there is a colorful ball-and-stick molecular model with red, blue, and yellow spheres. A white banner with a yellow border and a blue dashed line is positioned across the top, containing the word 'PEBBLES' in large, bold, black letters.

**GOGGLES**

The background of the entire image is a vibrant blue and cyan radial pattern. In the foreground, there are several science-related items: a white laboratory stand with a test tube containing orange liquid, a round-bottom flask with red liquid, and a beaker with blue liquid. To the right, there is a colorful ball-and-stick molecular model with red, blue, and yellow spheres. A white banner with a yellow border and a blue dashed line is positioned across the top, containing the word 'PEBBLES' in large, bold, black letters.

**BOTTLE**



**BOX**



**JAR**



**PLANT**



**BEANS**



**PAPER**



**PAPER TOWEL**



**TOOTHBRUSH**



**TUBE**



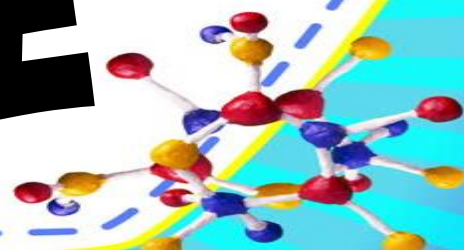
**PUT**



**POUR**



**PLACE**



**MAKE A HOLE**



**WATER**



**LEAVE**



**CUT**



**COVER**



**SHAKE**



**MIX**



**LINE UP**



**DROP**



**FOLD**



**FILL**



**WAIT**



**FREEZE**



# BRUSH

